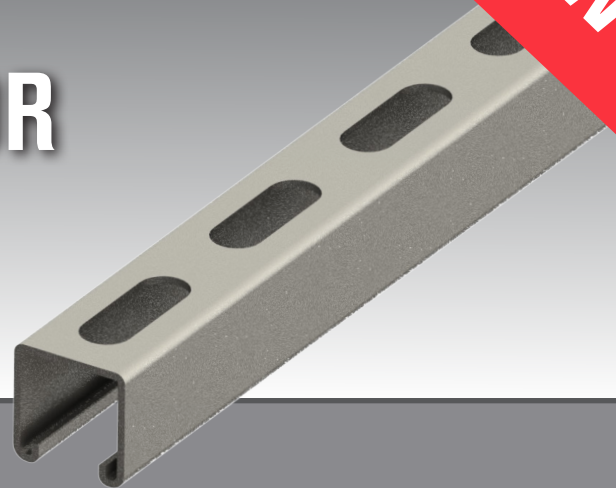


INTRODUCING... SLOTTED CHANNEL FOR 5/8" THREADED ROD

NEW



Acting on 'Voice of Customer' feedback; Power-Strut has developed a new slotted channel for 5/8" threaded rod. This is great for data centers, heavy-duty supports and other applications. Order today!

For more information, visit Power-Strut.com or contact your local sales rep.

SLOTTED CHANNEL FOR 5/8" THREADED ROD



FEATURES AND BENEFITS

- Sized for a 5/8" threaded rod or fastener
- Available with any 1-5/8" strut profile
- Available with all metallic materials and finishes
- Allowable loads: Multiply catalog loads for strut by 85%

ORDERING

- Add "WT" piercing suffix to the part number
Example: PS 200WT 20PG